

## ColorEdge

# The precision tool for creative professionals

**Absolute precision, color fidelity and reliability. That's what a ColorEdge graphics monitor from EIZO stand for. Creative professionals around the world rely on it every day to create, view, optimize and bring digital creations to life.**

The ColorEdge model range is divided into two series: the CS series and the CG series. The CS series offers the discerning user the perfect basis for professional work. A monitor from the CG series goes one step further. It is the full professional and offers maximum comfort, performance and features.

### Features CS series

- ◆ Large color gamut
- ◆ 16-bit LUT for maximum color depth
- ◆ 10-bit color display
- ◆ Lossless hardware calibration
- ◆ Effective anti-reflective coating
- ◆ Homogeneous image display thanks to Digital Uniformity Equalizer (DUE)
- ◆ EIZO factory calibration
- ◆ ColorNavigator calibration software including RGB validation
- ◆ Ergonomic adjustment options
- ◆ Monitor hood optional
- ◆ 5-year warranty with on-site replacement service

### Additional features CG series (selection)

- ◆ All features of the CS series
- ◆ Integrated sensor for automatic selfcalibration
- ◆ 16-bit 3D LUT for maximum color depth
- ◆ Deeper black levels and higher contrasts thanks to True Black Display
- ◆ Pre-calibrated presets for Rec.709, Rec.2020, DCI-P3
- ◆ Pre-calibrated HDR presets for PQ and HLG
- ◆ Additional features for filmmakers such as safe area marker, luminance and gamut warning
- ◆ CMYK and RGB validation
- ◆ Calibration report
- ◆ Fast stabilization of brightness and color
- ◆ Monitor hood included

**Working with the Best**

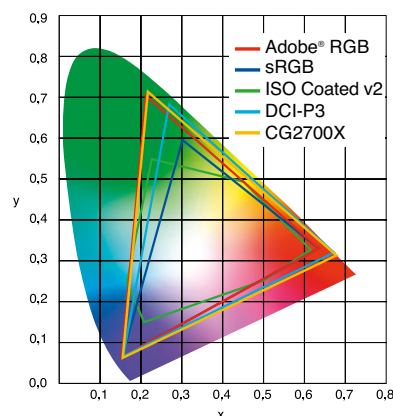






## So that you can trust your eyes

**As varied as the creative needs and areas of application are, they all have one thing in common: they all need a reliable monitor that guarantees an absolutely precise and unadulterated view of the digital file. In other words: you need a ColorEdge from EIZO.**

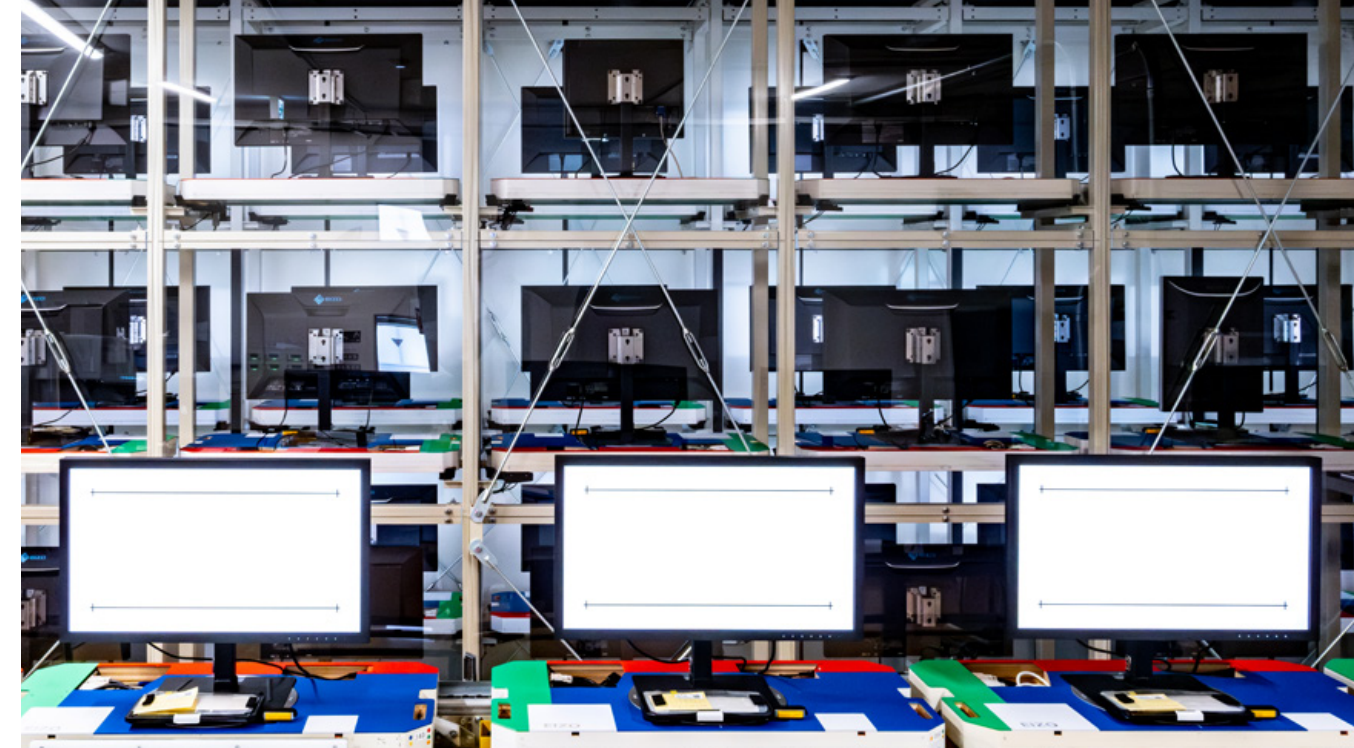


### Large color gamut and maximum precision

To be able to use the entire color spectrum of modern cameras, you need a monitor that covers the widest possible color gamut. That's why the IPS panel of our ColorEdge monitors covers large photo color gamuts such as AdobeRGB or DCI-P3 as well as the CMYK print color gamut ISO-Coated V2. This means that the full color spectrum of modern cameras is displayed unadulterated and without gaps. And a precise simulation of the print result in the soft proof view is also guaranteed.

### Lossless calibration without compromise

Periodic calibration is essential to ensure that a monitor always displays the same file in the same way during its entire service life. All ColorEdge monitors use the lossless hardware calibration process for this purpose. Unlike software calibration, where there is always a risk of loss of display quality, hardware calibration not only creates a correction profile for the graphics card, but also calibrates the LUT (look-up table) of the monitor. In conjunction with the easy-to-use, free ColorNavigator calibration software from EIZO, a ColorEdge monitor can be corrected very easily and lossless.



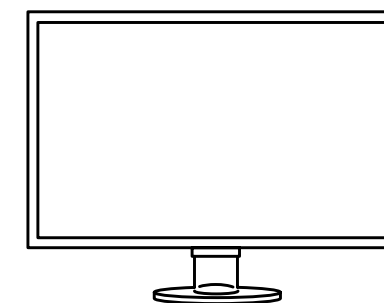
### Perfect ex works

Every single ColorEdge monitor is individually measured and optimally adjusted at the factory. For this purpose, the gamma curves of the red, green and blue channels are closely checked and, if necessary, corrected. This elaborate factory calibration is also the reason why recalibration with the ColorNavigator by the user is so quick.

### Maximum homogeneity

Each individual monitor panel is precisely measured over its entire surface at the EIZO factory. Any inhomogeneities in brightness and color casts are detected and removed. Identical colors always look the same across the entire surface of the panel, regardless of where they are displayed. This is the only way to ensure precise image processing and retouching.

ColorEdge with DUE



Other monitors without DUE



Monitor display in 8 bit



Monitor display in 10 bit

### 16-bit LUT and 10-bit mode

The LUT (Look-Up-Table) of ColorEdge monitors calculate internally with an extremely high color depth of at least 16 bits and the panel then outputs the signals with up to 10 bits. This means that billions of color tones are available for calculating the precise monitor display. This effectively prevents display errors caused by the monitor, such as banding or clipping, which result in tone breaks in gradients or color casts in the grayscale. Even fine nuances and structures in dark or highly saturated areas of the image are displayed in a differentiated and detailed manner.





CS2400R



CS2400S



CS2731



CS2740

Display	Type	IPS	IPS	IPS	IPS
	Screen size	24.1"/61.1 cm	24.1"/61.1 cm	27"/68.5 cm	26.9"/68.4 cm
	Native resolution	1,920×1,200 (Aspect ratio 16:10)	1,920×1,200 (Aspect ratio 16:10)	2,560×1,440 (Aspect ratio 16:9)	3,840×2,160 4K-UHD (Aspect ratio 16:9)
	Viewable image size (H × V)	518.4×324 mm	518.4×324 mm	596.7×335.7 mm	596.2×335.4 mm
	Pixel pitch	0.270×0.270 mm	0.270×0.270 mm	0.233×0.233 mm	0.155×0.155 mm
	Pixel density	94 ppi	94 ppi	109 ppi	164 ppi
	Display colours	USB Type C, DisplayPort, HDMI: 1.07 billion from a palette of 278 trillion colours (16 bit)	USB Type C, DisplayPort, HDMI: 1.07 billion from a palette of 278 trillion colours (16 bit)	USB Type C, DisplayPort, HDMI: 1.07 billion from a palette of 278 trillion colours (16 bit) DVI: 16.77 million from a palette of 278 trillion colours (16 bit)	USB Type C, DisplayPort, HDMI: 1.07 billion from a palette of 278 trillion colours (16 bit)
	Viewing angle (H / V, typical)	178°, 178°	178°, 178°	178°, 178°	178°, 178°
	Brightness (typical)	300 cd/m²	410 cd/m²	350 cd/m²	350 cd/m²
	Contrast ratio (typical)	1,000:1	1,350:1	1,000:1	1,000:1
True Black	–	–	–	–	
Response time (typical)	14 ms (grey-grey)	19 ms (grey-grey)	10 ms (grey-grey)	10 ms (grey-grey)	
Colour gamut (typical)	sRGB 100 %	AdobeRGB 99 %	AdobeRGB 99 %	AdobeRGB 99 %	
Video signals	Inputs	USB Type C (with DisplayPort Alt Mode, HDCP), DisplayPort (with HDCP), HDMI (with HDCP, Deep Color)	USB Type C (with DisplayPort Alt Mode, HDCP), DisplayPort (with HDCP), HDMI (with HDCP, Deep Color)	USB Type C (with DisplayPort Alt Mode, HDCP), DisplayPort (with HDCP), HDMI (with HDCP, Deep Color), DVI-D (with HDCP)	USB Type C (with DisplayPort Alt Mode, HDCP), DisplayPort (with HDCP), HDMI (with HDCP, Deep Color)
	Outputs	–	–	–	–
	Digital scanning frequency (H / V)	DisplayPort, DVI: 26–76 kHz, 23–61 Hz HDMI: 15–76 kHz, 23–61 Hz	DisplayPort, DVI: 26–76 kHz, 23–61 Hz HDMI: 15–76 kHz, 23–61 Hz	USB Type C, DisplayPort, DVI: 26–89 kHz, 23–61 Hz HDMI: 15–89 kHz, 23–61 Hz	USB Type C, DisplayPort: 25–137 kHz, 23–61 Hz HDMI: 15–135 kHz, 23–61 Hz
USB	Upstream	1 × Type C, USB 5Gbps (DisplayPort Alt Mode, 70 W power delivery), 1 × Type B, USB 5Gbps	1 × Type C, USB 5Gbps (DisplayPort Alt Mode, 70 W power delivery), 1 × Type B, USB 5Gbps	1× Type C, USB 5Gbps (DisplayPort Alt Mode, 60 W power delivery), 1× Type B, USB 5Gbps	1× Type C, USB 5Gbps (DisplayPort Alt Mode, 60 W power delivery), 1× Type B, USB 5Gbps
	Downstream	4 × Type A (2× USB 5Gbps, 2× USB 2.0)	4 × Type A (2× USB 5Gbps, 2× USB 2.0)	4× Type A (2× USB 5Gbps, 2× USB 2.0)	4× Type A (2× USB 5Gbps, 2× USB 2.0)
LAN connector		–	–	–	–
Audio	Inputs	–	–	–	–
	Outputs	–	–	–	–
Power supply	Power input	100–240 V AC, 50/60 Hz	100–240 V AC, 50/60 Hz	100–240 V AC, 50/60 Hz	100–240 V AC, 50/60 Hz
	Max. power consumption / typical power consumption / power save mode / stand-by mode	134 W / 15 W / ≤ 0.3 W / ≤ 0.3 W	149 W / 18 W / ≤ 0.3 W / ≤ 0.3 W	159 W / 34 W / ≤ 1 W / ≤ 1 W	168 W / 36 W / ≤ 1 W / ≤ 1 W
	Energy efficiency class	F	E	G	G
	Energy consumption / 1000 h	19 kWh	16 kWh	36 kWh	38 kWh
Calibration	Integrated calibration sensor and self-calibration	–	–	–	–
Shading Hood		◇	◇	◇	◇
Features and functions	Hardware calibration / 3D look-up table	◆/–	◆/–	◆/–	◆/–
	Brightness stabilisation	–	–	–	–
	Digital Uniformity Equalizer	–	–	–	–
	Preset modes	Colour modes (sRGB, Calibration, Custom)	Colour modes (AdobeRGB, sRGB, Calibration, Custom)	Colour modes (AdobeRGB, sRGB, Calibration, User)	Colour modes (AdobeRGB, sRGB, Calibration, User)
	HDR gamma	–	–	–	HLG, PQ curve (optional)
	ColorNavigator Network support	◆	◆	◆	◆
	CMYRGB colour control	–	–	–	–
	CMYK validation	–	–	–	–
	Colour temperature setting	◆	◆	◆	◆
	LUT system with post-LUT and factory-calibrated pre-LUT	◆	◆	◆	◆
	Gamut clipping	◆	◆	–	◆
	DUE priority	◆	◆	–	◆
	DCI 4K trimming	–	–	–	–
	Safe area marker / Pixel inspection	–/–	–/–	–/–	–/–
	Support for progressive and interlaced signal formats	◆	◆	–	◆
	Signal range extension (HDMI)	◆	◆	◆	◆
	Support for YUV signal (DisplayPort and HDMI input)	◆	◆	–	◆
	3D LUT film emulation (support for LogView LUT)	–	–	–	–
	KVM switch	◆	◆	◆	◆
	User-specific button assignment	◆	◆	◆	–
	Button guide (button layout overview)	◆	◆	◆	◆
	Operation in portrait and landscape format	◆	◆	◆	◆
Dimensions and weight	Dimensions (W × H × D, landscape format) / Net weight	554.4×396–551×245 mm/8.1 kg	554.4×396–551×245 mm/8.2 kg	638×404–559×265 mm/10.1 kg	638×404–559×265 mm/10.3 kg
	Height adjustment range	155 mm	155 mm	155 mm	155 mm
	Tilt/Swivel/Rotation angles	35° to the back, 5° to the front/344°/90°	35° to the back, 5° to the front/344°/90°	35° to the back, 5° to the front/344°/90°	35° to the back, 5° to the front/344°/90°
	VESA attachment	100×100 mm	100×100 mm	100×100 mm	100×100 mm
Certifications and standards*	*Current information is available from EIZO Group companies and distribution partners in your country	CE, CB, UKCA, TÜV/GS, TÜV Certified ergonomics (including ISO 9241-307), cTÜVus, TÜV/S, PSE, FCC-B, CAN ICES-3(B), RCM, VCCI-B, RoHS, WEEE	CE, CB, UKCA, TÜV/GS, TÜV Certified ergonomics (including ISO 9241-307), cTÜVus, TÜV/S, PSE, FCC-B, CAN ICES-3(B), RCM, VCCI-B, RoHS, WEEE	CE, CB, UKCA, TÜV/GS, TÜV Certified ergonomics (including ISO 9241-307), cTÜVus, TÜV/S, PSE, FCC-B, CAN ICES-3(B), RCM, VCCI-B, RoHS, WEEE	CE, CB, UKCA, TÜV/GS, TÜV Certified ergonomics (including ISO 9241-307), cTÜVus, TÜV/S, PSE, FCC-B, CAN ICES-3(B), RCM, VCCI-B, RoHS, WEEE
Supplied accessories		Power cord, signal cable (HDMI – HDMI, USB-C – USB-C), USB-cable, Set-up Guide, Calibration certificate	Power cord, signal cable (HDMI – HDMI, USB-C – USB-C), USB-cable, Set-up Guide, Calibration certificate	Power cord, signal cable (HDMI – HDMI, USB-C – USB-C), USB- cable, Set-up Guide	Power cord, signal cable (DisplayPort–DisplayPort, USB-C – USB-C), USB-cable, Set-up Guide
Quality warranty	Zero pixel error warranty <sup>1</sup>	◆	◆	◆	◆
	Colour and brightness warranty <sup>2</sup>	–	–	–	–
	Warranty with on-site exchange service <sup>3</sup>	Five years	Five years	Five years	Five years

Free from bright sub-pixels (partial image elements ISO 9241-307) six months following original purchase date.



## CG2400S | CG2400SV

**CG2700S**

CG2700X

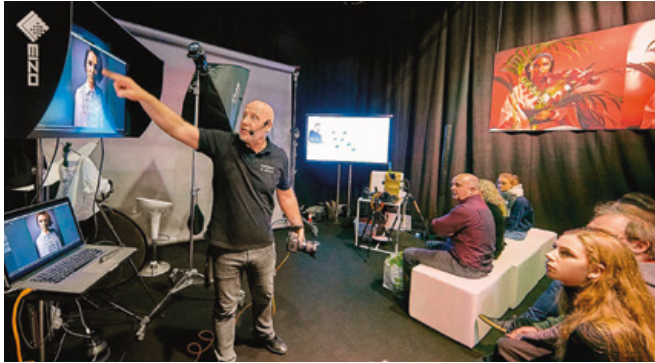


# CG3100X

IPS	IPS	IPS	IPS
24.1"/61.1 cm	27"/68.5 cm	26.9"/68.4 cm	30.5"/77.5 cm
1.920×1.200 (Aspect ratio 16:10)	2.560×1.440 (Aspect ratio 16:9)	3.840×2.160 4K-UHD (Aspect ratio 16:9)	4.096×2.160 DCI-4K (Aspect ratio 17:9)
518.4×324 mm	596.7×335.7 mm	596.2×335.3 mm	685.7×361.6 mm
0.270×0.270 mm	0.233×0.233 mm	0.155×0.155 mm	0.167 x 0.167 mm
94 ppi	109 ppi	164 ppi	152 ppi
USB Type C*, SDI <sup>1</sup> , DisplayPort, HDMI: 1.07 billion from a palette of 278 trillion colours (16 bit)	USB Type C, DisplayPort, HDMI: 1.07 billion from a palette of 278 trillion colours (16 bit)	USB Type C, DisplayPort, HDMI: 1.07 billion from a palette of 278 trillion colours (16 bit)	USB Type C, DisplayPort, HDMI: 1.07 billion from a palette of 24 bit palette
178°, 178°	178°, 178°	178°, 178°	178°, 178°
400 cd/m²	400 cd/m²	500 cd/m²	500 cd/m²
1.800:1	1.600:1	1.450:1	1.800:1
◆	◆	◆	◆
11 ms (grey-grey)	19 ms (grey-grey)	13 ms (grey-grey)	15 ms (grey-grey)
AdobeRGB (>99 %), DCI-P3 (>98 %)	AdobeRGB 99%, DCI-P3 98%	AdobeRGB 99%, DCI-P3 98%	AdobeRGB 97%, DCI-P3 99%
USB Type C (with DisplayPort Alt Mode and HDCP) <sup>4</sup> , BNC (3G Level A/HD-SDI) <sup>5</sup> , DisplayPort (with HDCP), HDMI (with HDCP, Deep Color)	USB Type C (with DisplayPort Alt Mode, HDCP) DisplayPort (with HDCP), HDMI (with HDCP, Deep Color)	USB Type C (with DisplayPort Alt Mode, HDCP), DisplayPort (with HDCP), HDMI (with HDCP, Deep Color)	USB Type C (with DisplayPort Alt Mode, HDCP), DisplayPort (with HDCP), HDMI with FRL, HDCP, Deep Color
– <sup>1</sup> , BNC (3G/HD-SDI through-out (active)) <sup>1</sup>	–	–	–
USB Type C*, DisplayPort: 26–76 kHz, 23–61 Hz HDMI: 15–76 kHz, 24–61 Hz	USB Type C, DisplayPort: 26–89 kHz, 23–61 Hz HDMI: 15–89 kHz, 23–61 Hz	USB Type C, DisplayPort: 25–137 kHz, 23–61 Hz HDMI: 15–135 kHz, 23–61 Hz	USB Type C, DisplayPort: 25–137 kHz, 23–61 Hz HDMI: 15–135 kHz, 23–61 Hz
1× Type C, USB 5Gbps (DisplayPort Alt Mode, 70 W power delivery), 1× Type B, USB 5Gbps <sup>1</sup> , 2× Type B, USB 5Gbps <sup>4</sup> 4× Type A (2× USB 5Gbps, 2× USB 2.0)	1× Type C, USB 5Gbps (DisplayPort Alt Mode, 92 W power delivery), 1× Type B, USB 5Gbps 4× Type A (2× USB 5Gbps, 2× USB 2.0)	1× Type C, USB 5Gbps (DisplayPort Alt Mode, 94 W power delivery), 1× Type B, USB 5Gbps 4× Type A (2× USB 5Gbps, 2× USB 2.0)	1× Type C, USB 5Gbps (DisplayPort Alt Mode, 94 W power delivery), 1× Type B, USB 5Gbps 4× Type A (2× USB 5Gbps, 2× USB 2.0)
–	RJ-45 (1000BASE-T)	RJ-45 (1000BASE-T)	RJ-45 (1000BASE-T)
– <sup>1</sup> , DisplayPort, HDMI, SDI <sup>1</sup>	–	–	–
– <sup>1</sup> , 3.5 mm Stereo-Klinke-Buchse <sup>5</sup>	–	–	–
100–240 V AC, 50/60 Hz	100–240 V AC, 50/60 Hz	100–240 V AC, 50/60 Hz	100–240 V AC, 50/60 Hz
150 W/17 W/≤ 0.5 W/≤ 0.3 W <sup>1</sup> , 64 W/18 W/≤ 0.5 W <sup>1</sup>	187 W/17 W/≤ 0.5 W/≤ 0.3 W	225 W/34 W/≤ 0.5 W/≤ 0.5 W	270 W/86 W/≤ 0.5 W/≤ 0.5 W
E <sup>1</sup>	E	G	G
16 kWh <sup>1</sup>	18 kWh	35 kWh	51.9 kWh
◆	◆	◆	◆
◆	◆	◆	◆
◆/◆	◆/◆	◆/◆	◆/◆
◆	◆	◆	◆
◆	◆	◆	◆
Colour modes (AdobeRGB <sup>4</sup> , sRGB, BT.2020, BT.709, DCI-P3, PQ_DCI-P3, HLG_BT.2100, PQ_BT.2100 <sup>4</sup> , Calibration, SYNC_SIGNAL, User)	Colour modes (AdobeRGB, sRGB, BT.2020, BT.709, DCI-P3, PQ_DCI-P3, HLG_BT.2100, Calibration, SYNC_SIGNAL, User)	Colour modes (AdobeRGB, sRGB, BT.2020, BT.709, DCI-P3, PQ_DCI-P3, HLG_BT.2100, Calibration, SYNC_SIGNAL, User)	Colour modes (AdobeRGB, sRGB, BT.2020, BT.709, DCI-P3, PQ_DCI-P3, HLG_BT.2100, Calibration, SYNC_SIGNAL, User)
HLG, PQ curve	HLG, PQ curve	HLG, PQ curve	HLG, PQ curve
◆	◆	◆	◆
◆	◆	◆	◆
◆	◆	◆	◆
◆	◆	◆	◆
◆	◆	◆	◆
◆	◆	◆	◆
◆	◆	◆	◆
–	–	◆	–
◆/◆	◆/◆	◆/◆	◆/◆
◆	◆	◆	◆
◆	◆	◆	◆
◆	◆	◆	◆
◆	◆	◆	◆
◆	◆	◆	◆
◆	◆	◆	◆
◆	◆	◆	◆
◆	◆	◆	◆
◆	◆	◆	◆
◆	◆	◆	◆
◆	◆	◆	–
554.4×408.1–563.1×245 mm/8.5 kg	638×416–571×245 mm/9.4 kg	638×416–571×245 mm/9.8 kg	721×428.1–583.1×290 mm/12.3 kg
155 mm	155 mm	155 mm	155 mm
35° to the back, 5° to the front/344°/90°	35° to the back, 5° to the front/344°/90°	35° to the back, 5° to the front/344°/90°	35° to the back, 5° to the front/344°/– 100×100 mm
CE, CB, UKCA, TÜV/GS, TÜV Certified ergonomics (including ISO 9241-307), FograCert Softproofing System (class A) <sup>1</sup> , cTÜVus, TÜV/S, PSE, FCC-B, CAN ICES(B), RCM, VCCI-B, RoHS, WEEE	CE, CB, UKCA, TÜV/GS, TÜV Certified ergonomics (including ISO 9241-307), TÜV/Color Accuracy (Quick Stability), FograCert Softproofing System (class A), cTÜVus, TÜV/S, PSE, FCC-B, CAN ICES-3(B), RCM, VCCI-B, RoHS, WEEE	CE, CB, UKCA, TÜV/GS, TÜV Certified ergonomics (including ISO 9241-307), TÜV/Color Accuracy (Quick Stability), cTÜVus, TÜV/S, PSE, FCC-B, CAN ICES-3(B), RCM, VCCI-B, RoHS, WEEE	CE, CB, UKCA, TÜV/GS, TÜV Certified ergonomics (including ISO 9241-307), TÜV/Color Accuracy (Quick Stability), FograCert Softproofing System (class A), cTÜVus, TÜV/S, PSE, FCC-B, CAN ICES-3(B), RCM, VCCI-B, RoHS, WEEE
Power cord, signal cable (HDMI–HDMI, USB-C–USB-C*, DisplayPort – DisplayPort <sup>1</sup> ), USB cable, Set-up Guide, Calibration certificate, Shading Hood	Power cord, signal cable (HDMI–HDMI, USB-C–USB-C), USB cable, Set-up Guide, Calibration certificate, Shading Hood	Power cord, signal cable (HDMI–HDMI, USB-C–USB-C), USB cable, Set-up Guide, Calibration certificate, Shading Hood	Power cord, signal cable (HDMI–HDMI, USB-C–USB-C), USB cable, Set-up Guide, Calibration certificate, Shading Hood
◆	◆	◆	◆
◆	◆	◆	◆
Five years	Five years	Five years	Five years

<sup>3</sup>Up to a maximum of 30,000 hours of monitor usage time.

# EIZO ACADEMY



## Because you never stop getting better.

In the EIZO Academy you will find an extensive range of video tutorials, technical articles, seminars and workshops. Accompany us to the Lofoten Islands or through Namibia - in our two Colourclass video series, our experts give you extensive tips on monitor calibration, color management and soft proofing. They also provide in-depth knowledge on numerous photographic topics. You will also find specialist articles with detailed monitor knowledge. You can find everything about the EIZO Academy and the current dates of our seminars, workshops and webinars at: [www.eizo.academy](http://www.eizo.academy)

All product names are trademarks or registered trademarks of EIZO Corporation in Japan and other countries or their respective companies.

Copyright © 2025 EIZO Europe GmbH,  
Belgrader Str. 2, 41069 Mönchengladbach, Germany.  
All rights, errors and changes reserved.  
Last updated: August 2025

